

# eS10S Spicer Torque-Hub™

## Benefits

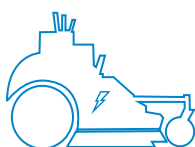
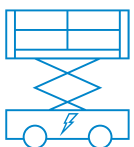
- Spicer Torque-Hub™ eS10S product design with TM4 Electroynamics™ Integrated advanced motor technologies
- Greater efficiency and compact package size for electric Mobile Elevated Working Platform and Turf application

## Features

- Electric Wheel Drive to meet Slab Scissor and Zero Turn Mower fully electric drive performance requirements
- Torque rating of 1.000 Nm
- Designed specifically for electric Slab Scissor and Zero Turn Mower duty cycle to perform reliably for the life of the machine
- Minimal TCO – minimum maintenance requirements and high efficiency reduces operation cost and energy consumption
- Reducing CO<sub>2</sub> emissions through electrification improves overall carbon footprint



Ideal for Mobile Elevated Work Platforms and Zero Turn Mower



# eS10S Spicer Torque-Hub™

Electric Wheel drive specifically designed for high efficiency AC Slab Scissor machine and Zero Turn Mower application. Double stage planetary with spindle output design in combination with TM4 ElectroDynamics™ advanced electric motor technologies offers a best-in-class efficiency package delivering power-dense and best-in-class torque and power performance.

FULLY INTEGRATED ELECTRO-MECHANICAL DRIVE SYSTEM WITH IP67 MOTOR PROTECTION FROM ENVIRONMENTAL HAZARDS

INTERNAL INTEGRATED ELECTRIC PARKING BRAKE DESIGN FOR MAXIMUM HOLDING POWER

QUIET OPERATION

TM4 ELECTRODYNAMICS™ IPM ADVANCED MOTOR TECHNOLOGIES FOR GREATER EFFICIENCY WITH COMPACT SIZE AND WEIGHT

COMPACT DOUBLE-STAGE PLANETARY GEAR DESIGN PROVIDES SUPERIOR GRADEABILITY

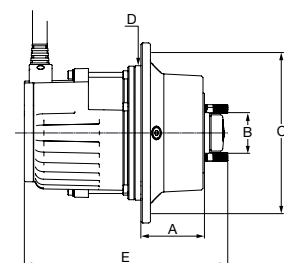
MECHANICAL DISCONNECT DEVICE FOR TOWING



eS10S	
Output Torque Rating Nm [lbf ft]	1,000 [738]
Reduction Ratio Range	24-45
Electric Motor Type	IPM 120-40      IPM 120-60
Motor Max Speed rpm	5,000
Motor peak power kW [Hp]	3.5 [4.70]      4 [5.36]
Motor cont. power S2, 60min. kW [Hp]	1.5 [2.00]      2.1 [2.81]
Motor peak Torque Nm [lbf ft]	21 [15.48]      30 [22.13]

eS10S	
A - Flange to Flange mm [in]	78.7 [3.10]
B - Hub Length mm [in]	50 [1.97]
C - Wheel Pilot mm [in]	82 [3.23]
D - Wheel Bolt Circle Diameter mm [in]	165 [6.50]
E - Total unit length mm [in]	246* / 315**

\*IPM 120-40; \*\*IPM 120-60



[Dana.com/e-Mobility](http://Dana.com/e-Mobility)

#### Application Policy

Capacity ratings, features, and specifications vary depending upon the model and type of service. Application approvals must be obtained from Dana; contact your representative for application approval. We reserve the right to change or modify our product specifications, configurations, or dimensions at any time without notice.

