



SPICER[®]
Torque-Hub[®]

Spicer[®] Torque-Hub[®] C0 Series Wheel Drive



*Spicer[®] Torque-Hub[®] C0 Series
specifically designed for today's
high-performance sprayers.*

C0 Series

Spicer® Torque-Hub® New C0 Series

With 50 years' experience with self-propelled sprayers, Dana took a fresh approach incorporating the best design features into the new C0 Series of Spicer® Torque-Hub® wheel drives. These features provide machine designers with the greatest flexibility to accommodate the current market demands for a range of machines, satisfying requirements for machine weight, speed, tire offsets, braking performance and durability.

DUAL BRAKE SYSTEM
WORKING INDEPENDENTLY
FOR MORE **SAFETY & RELIABILITY**

HEAVY DUTY MAIN BEARINGS
AND RETENTION FOR HIGH WHEEL
OFFSETS AND **SIDE LOADS**

HIGH SPEED THERMAL
STABILITY FOR OPERATING
MACHINES **UP TO 60 KM/H**

PATENTED BRAKE SYSTEM
TO MEET ON-ROAD STOPPING
REQUIREMENTS



Recommended motor: Brevini® SH9VR

Additional Features and Benefits

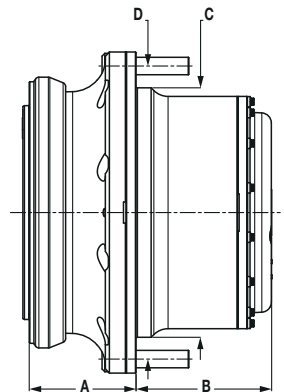
- 1 Product range specifically designed for modern high-performance sprayers
- 5 Products for machine capacities carrying from 2000 to 8000 liter
- Torque ratings from 16.000 Nm to 36.000 Nm
- Low maintenance requirements and easy to service
- Suitable for hydraulic and electric vehicles, with Dana's hydraulic and electric motors
- Easily integrated with central tire inflation systems (CTIS)



	C016	C021	C024	C030	C036
Service Brake	▲	▲	▲	▲	▲
Parking Brake	▲	▲	▲	▲	▲
Disengage	▲	▲	▲	▲	▲

▲ - Solution available

	C016	C021	C024	C030	C036
A - Flange to Flange mm [in]	96 [3.78]	135 [5.31]	135 [5.31]	135 [5.31]	135 [5.31]
B - Hub Length mm [in]	168 [6.6]	156 [6.16]	171 [6.73]	171 [6.73]	200 [7.87]
C - Wheel Pilot Diameter mm [in]	280 [11]	315 [12.40]	315 [12.40]	315 [12.40]	370 [14.57]
D - Wheel Bolt Circle Diameter mm [in]	335 [13.187]	370 [14.57]	370 [14.57]	370 [14.57]	425 [16.73]



	C016	C021	C024	C030	C036
Output Torque Rating [lbf ft]	16,000 Nm [141,600]	21,000 Nm [185,850]	24,000 Nm [212,400]	30,000 Nm [265,500]	36,000 Nm [318,600]
Ratio Range	24:1 - 34:1	22:1 - 35:1	22:1 - 30:1	22:1 - 30:1	22:1 - 27:1
Motor Mount Cartridge	60cc	60cc & 80cc	80cc & 110cc	110cc	110cc
Machine Capacity [gal]	Up to 3000 L [793]	Up to 3800 L [1004]	Up to 5000 L [1321]	Up to 5000 L [1321]	Up to 8000 L [2113]

Dana.com/oh/contact

Application Policy

Capacity ratings, features, and specifications vary depending upon the model and type of service. Application approvals must be obtained from Dana; contact your representative for application approval. We reserve the right to change or modify our product specifications, configurations, or dimensions at any time without notice.

