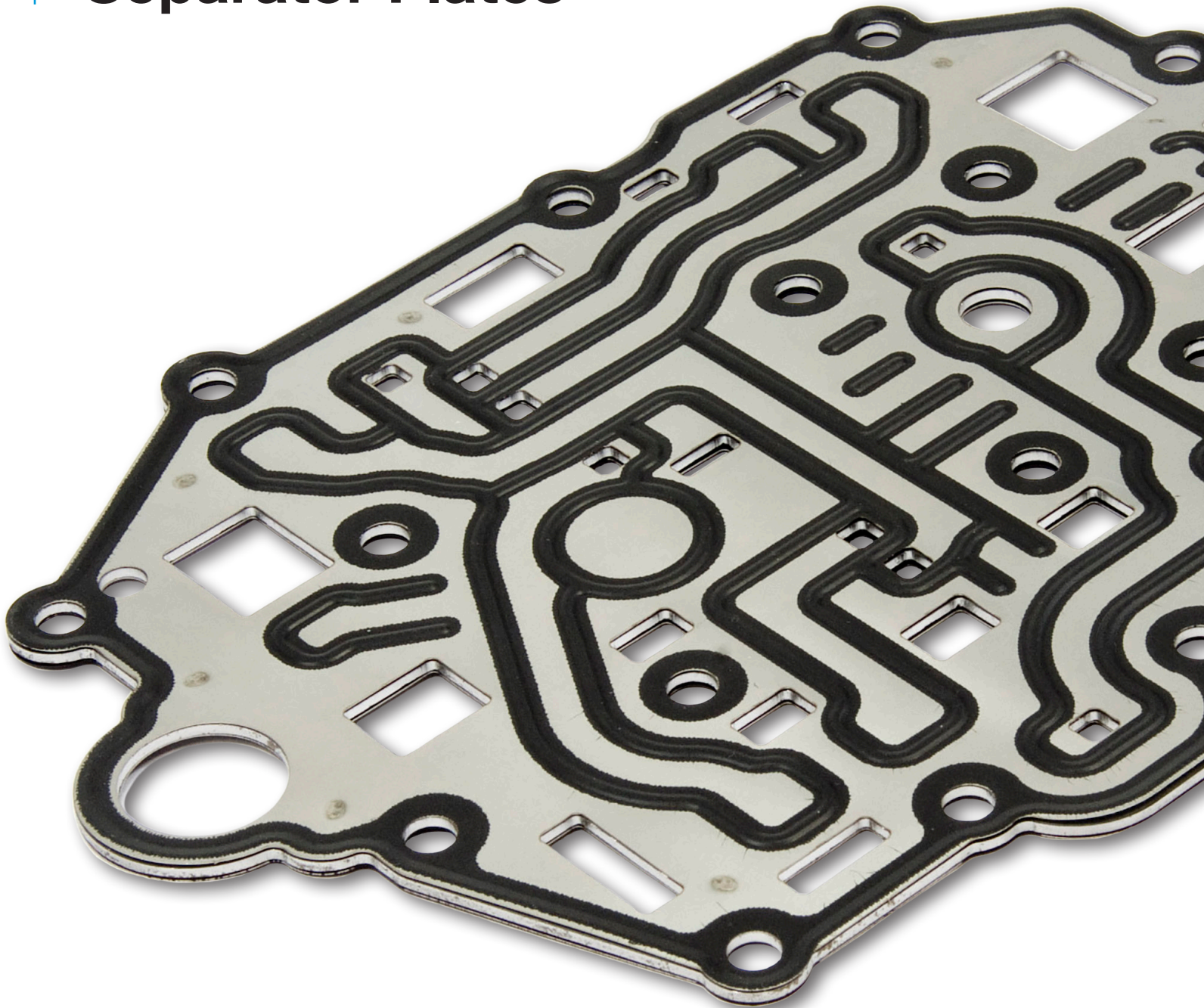




VICTOR REINZ®

Sealing Products

Transmission Valve Body **Separator Plates**



Transmission Valve Body Separator Plates

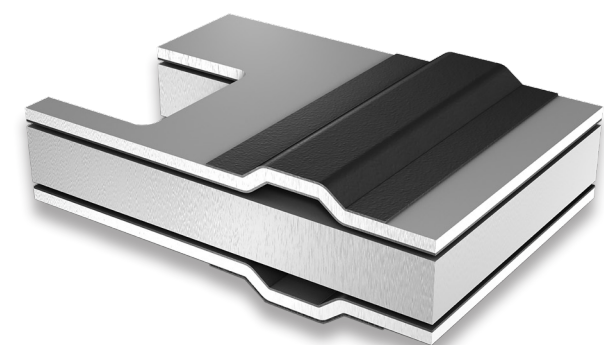
Cutting-edge technology improves sealing, efficiency, and durability for advanced multi-speed, dual-clutch, and continuously variable transmissions.

Dana's transmission separator plates offer optimum performance under pressure by substantially increasing valve body sealing for high-performance transmissions and helping eliminate leak paths. This technology allows optimized channel paths and smaller valve bodies through the reduction of fasteners that can interfere with desired flow paths.



Single-Layer Steel Separator Plate

- For mechatronic modules
- Coating with high adaptability and sealing potential
- Partial fluoroelastomer (FKM) coating on both sides to control fluids
- Fulfills cleanliness requirements for transmission products



Multi-Layer Steel (MLS) Separator Plate

- Three-layer design
- MLS separator plate for high sealing demands on mechatronic modules
- Bead as elastic sealing element
- Partial fluoroelastomer (FKM) coating for micro-sealing in critical areas
- Fulfills cleanliness requirements for transmission products
- Enables higher operating pressures required for 8- or 9-speed and dual-clutch transmissions
- Lower installed thickness
- Supports smaller valve bodies – lower seal width

Properties	Single-Layer Steel Separator Plate	MLS Separator Plate
Required sealing pressure (depending on internal pressure)*	Min. 10 N/mm* (at 30 bar)	Min. 10 – 15 N/mm* (at 80 bar)
Recommended bolt spacing*	50 – 60 mm*	50 – 100 mm*
Component flatness under tightening conditions* (total of both components)	High*	Medium*
Recommended sealing web width	Min. 3.0 mm	Min. 3.0 mm
Required component stiffness	High	Medium
Roughness of sealing area	$R_z < 16\mu\text{m}; R_{\text{max}} < 25\mu\text{m}$	$R_z < 16\mu\text{m}; R_{\text{max}} < 25\mu\text{m}$
Resistance to transmission oils	High	High
Adaptability	Medium	High
Internal pressures*	< 30 bar*	< 80 bar*

* Values depend on component design

Dana.com/light-vehicles

Application Policy

Capacity ratings, features, and specifications vary depending upon the model and type of service. Application approvals must be obtained from Dana; contact your representative for application approval. We reserve the right to change or modify our product specifications, configurations, or dimensions at any time without notice.



VICTOR REINZ®

Sealing Products